



**isolvedNetwork**  
Certified Partner



Your paragraph text



***PayPLUS***

Payroll Service Like No Other!



# PayPLUS & the isolved People Cloud



**PayPLUS** and the isolated People Cloud delivers an elevated employee experience with a consumer-grade user interface that is intuitive and performance-ready on any device. Accessible via your preferred web browser or mobile app, you can get the information you need when you need it most. Additionally, isolated People Cloud offers a conversational virtual assistant to support your people in the flow of work (to answer common HR questions 24/7), intelligent reporting (for a single source of workforce truth), predictive analytics (to identify and model improvements to business strategy) and even a marketplace of solutions (to extend your investment further). isolated People Cloud will support you across four core areas.

## HR, Payroll & Benefits

Easily manage the entire employee life cycle, securely store and share data, ensure organization-wide compliance while offering effortless online benefits enrollment. isolated even helps you process payroll efficiently, accurately and completely every time.

## Workforce Management

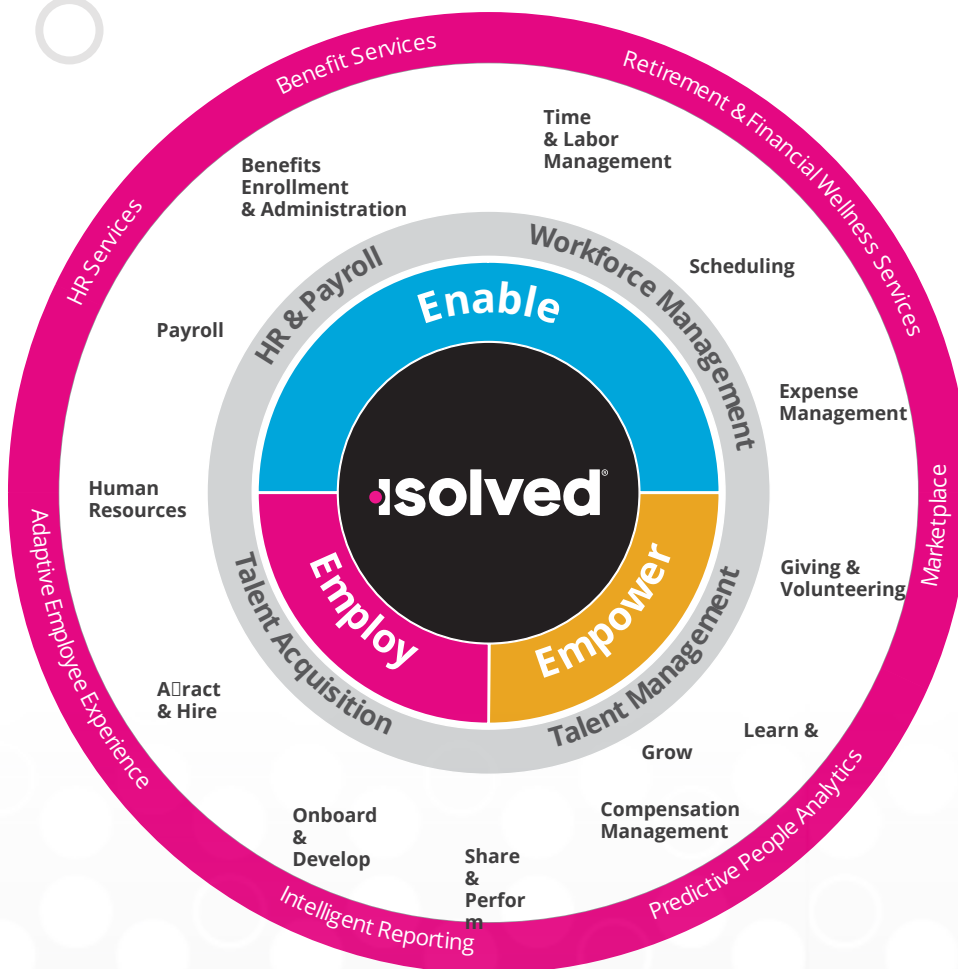
Accurately track, manage and process time, attendance and expenses for your entire workforce (remote or mobile), while also offering streamlined self-service that saves time and money.

## Talent Acquisition

Attract, recruit and hire the most talented individuals, while helping newly hired employees become productive fast, by eliminating paperwork and redundancies from the onboarding process.

## Talent Management

Empower employees to stay connected, share ideas, seek feedback and collaborate - while improving productivity, boosting performance and strategically compensating and rewarding success.



# The Right Combination of Software and Services

And while the technology can free your time and give you the information you need to shape strategy and meet your business goals, the advice, support and tools delivered through isolated HR Services will help you make the most of that new efficiency and information. Together, they will help you define and deliver an employee experience that attracts and retains the best talent, develop your workforce and deliver strategic insight to shape the future of your business.

## HR Services

isolated HR Services extends your team and enables you to become more strategic and run at top operational efficiency. A dedicated HR compliance and best-practice professional is with you every step of the way, tapping into a wealth of existing employee insights and providing you with HR assessments, recommendations, and regular check-ins. Improving inefficient processes, staying ahead of changing regulations, managing staff turnover, and more is all possible with isolated HR Services.

## Financial Wellness and Retirement Services

Our financial wellness and retirement services equip you with the tools needed to help your employees manage their money more effectively. From offering retirement plan options to cost-effective benefits and making pay more accessible through pay cards and earned wage access, we have the offerings you need to support your employees.

By integrating a comprehensive portfolio of financial wellness and retirement services, our solutions give employees the opportunity to reach their financial goals and access funds when they need it most.

## Benefit Services

isolated provides a dedicated team of experts to help streamline end-to-end benefit administration and allow your internal resources to add more value to the business. From compliance services like ACA, POP and ERISA, to flexible benefit accounts like FSA, HSA and HRA, as well as continuation services like COBRA and leave administration, you can rest assured that isolated has you covered with all your comprehensive benefit services' needs.



# The Return on Investment of PayPLUS & isolved People Cloud

Solving the challenges of building a more efficient, strategic HR function requires bringing together technology, expertise and services designed for the needs of small-and medium-sized businesses. The isolved approach delivers technology and services in a way that is unique and impactful, enabling our customers to:

## Increase Productivity with an Intelligently Connected Platform

Eliminate admin and added work to get more time back in your day and focus on the things that really matter with an intelligently connected platform that automates broad and deep to deliver a “single source of truth” and increased productivity for you and your business — no compromise.



## Ensure Performance with isolved Employee Experience by Design™

Spend less time on support and technical issues while ensuring your employees can spend more time being productive with employee experience by design that ensures operational and performance consistency on every device, every time. Progressive, right?

## Accelerate Decisions with isolved Analytics Everywhere™

Make better, faster and more informed decisions with deep actionable insights on every aspect of your business that will save you time and stress from measuring, managing and motivating your workforce – in real-time and in-context – all without interrupting the flow of work.

## Reduce Risk with Your Most-Trusted Partner™

Having a secure, stable and scalable partner means you're always cared for — with timely, comprehensive support, backed by local, knowledgeable service when you need it and with industry-leading NPS and vendor satisfaction scores independently validated — we provide peace of mind.

